



East Durham Wind, LP

Modification Report No. 1 – East Durham Wind Energy Centre

Prepared by:

WSP Canada Inc.

500 – 600 Cochrane Drive

Markham, ON, Canada L3R 5K3

www.wspgroup.com

905-475-7270 tel

905-475-5994 fax

Project Number:

111-15446-00

Date:

August 28, 2014

TABLE OF CONTENTS

1.	INTRODUCTION	1
1.1	The Proponent	1
1.2	Project Study Area	1
2.	PROPOSED PROJECT MODIFICATION	1
2.1	Project Modification	1
2.1.1	Natural Heritage Assessment	1
2.1.2	Archaeological Assessment	6
2.2	New Potential Environmental Effects and Mitigation Measures	8
3.	EDITS TO THE PROJECT DESCRIPTION REPORT	11
4.	EDITS TO THE DESIGN AND OPERATIONS REPORT	12
5.	EDITS TO THE CONSTRUCTION PLAN REPORT	14
6.	EDITS TO THE DECOMMISSIONING PLAN REPORT	16
7.	SUMMARY AND CONCLUSIONS	17

APPENDICES

APPENDIX A	NATURAL HERITAGE ADDENDUM
APPENDIX B	ARCHAEOLOGICAL ASSESSMENT ADDENDUM
APPENDIX C	PROJECT LOCATION MAPS ORIGINALLY APPROVED
APPENDIX D	PROJECT LOCATION MAPS MODIFIED

TABLE OF TABLES

Table 2-1: Summary of Project Modification	9
Table 3-1: Edits to the Project Description Report	11
Table 4-1: Edits to the Design and Operations Report	12
Table 5-1: Edits to the Construction Plan Report	14
Table 6-1: Edits to the Decommissioning Plan Report	16

TABLE OF FIGURES

Figure 1: Revised Access Road Entrance for Turbine 4	3
Figure 2: Revised Access Road Entrance to Turbine 10.....	4
Figure 3: Revised Access Road Entrance to Turbine 11.....	5
Figure 4: Revised Access Road Entrance to Turbine 11 with Archaeological Buffers	7
Figure 5: Revised Project Location	10

1. INTRODUCTION

1.1 The Proponent

The Project will be owned and operated by East Durham Wind, LP, a subsidiary of NextEra Energy Canada, LP. NextEra Energy Canada, LP, parent company is NextEra Energy Resources, LLC, a global leader in wind energy generation with a current operating portfolio of more than 100 wind energy projects in North America. The wind farms in Canada include: Mount Copper and Mount Miller, (both 54 megawatts (MW) located in Murdochville, Quebec; Pubnico Point, (31 MW) located near Yarmouth, Nova Scotia; and Ghost Pine (82 MW), located in Kneehill County, Alberta.

The primary contacts for the project are as follows:

Project Proponent	Project Consultant
Derek Dudek Community Relations Consultant NextEra Energy Canada, LP 390 Bay St, Suite 1720 Toronto, ON M5H 2Y2 Phone: 1-877-257-7330 Email: EastDurhamWind@NextEraEnergy.com	Patricia Becker, MES Project Manager (Energy) WSP (formerly GENIVAR) 5 th Floor, 600 Cochrane Drive Markham, Ontario, L3R 5K3 Phone: 905-713-2837 Email: pat.becker@wspgroup.com

1.2 Project Study Area

The proposed Project is located in the Municipality of West Grey, east of the Community of Durham and west of Village of Priceville, within Grey County. The Project Study Area consists of the area being studied for the wind farm components. The Project Study Area is generally bounded by:

- Concession Road 6 to the north
- Sideroad 40, Townline Artemesia-Glenelg and Sideroad 50 to the east
- The West Grey – Southgate municipal boundary to the south
- Baseline to the west

The location of the Project Study Area was defined early in the planning process for the proposed wind energy facility, based on the availability of wind resources, approximate area required for the proposed project, and availability of existing infrastructure for connection to the electrical grid. The Project Study Area was used to facilitate information collection.

The following co-ordinates define the external boundaries (corners) of the Project Study Area:

Study Area Corner	Easting NAD83 UTM17	Northing NAD83 UTM17
Northwest	517446	4898788
Northeast	528740	4899612
Southeast	529409	4890833
Southwest	519266	4889235

2. PROPOSED PROJECT MODIFICATION

East Durham Wind, LP is proposing a modification to the Project. The proposed Project modification is summarized in Section 2.1 and Figures 1, 2 and 3.

Table 2-1 summarizes and documents the following about the proposed modifications:

- A description of the modification and a rationale for why the modification is proposed; and
- New potential environmental effects and corresponding mitigation measures.

Figure 5 illustrates the modified Project Location.

2.1 Project Modification

Since submission of the REA application to the MOE, the proponent has identified the need to expand the Project Location due to an increase in the Construction Disturbance Areas (CDA) associated with the installation of three new access road entrances and associated underground electrical collection lines. These modifications to the location of three access road entrances are needed to accommodate Grey County and the Municipality of West Grey entrance permit requirements.

Two entrances (Turbines 4 and 11) from County Road 4 need to be modified in order to comply with a revised Grey County entrance permit policy which came into effect since the January 2013 submission of the REA application to the MOE. In response to discussions and comments received from the Municipality of West Grey, there is one entrance (Turbine 10) from The Glen Road that may need to be modified. The proposed changes are displayed in Figures 1, 2 and 3.

Figures 1, 2 and 3 show the existing construction disturbance areas (CDA) and the proposed additional CDA to accommodate the three new access road entrances and the associated underground electrical collection line. The original proposed CDA combined with the additional CDA represent the modification to the Project Location to accommodate the three revised access road entrances. While the figures in this modification report show a proposed access road and collection line, there is flexibility as the siting of the collection line and access roads can be anywhere within the full CDA (original and additional areas).

2.1.1 Natural Heritage Assessment

The areas associated with the expanded CDA for entrances at three turbine locations were included within the areas where natural heritage surveys were previously conducted, therefore no additional specific site investigation was conducted for the increase in the CDA for the three revised site entrances.

The Natural Heritage Assessment Addendum No. 2 Report (January 2014) was submitted to the MNR in January 2014 for review and sign-off. The report outlined the proposed modifications to the CDA to accommodate the three revised site entrances. The MNR provided sign-off on Addendum No. 2 on August 26, 2014. Addendum No. 2 and the MNR sign-off letter are provided in Appendix A.

Access Road/Underground Electrical Collection to Turbine 4

To comply with Grey County's revised entrance permit policy for entrances to existing roads, the proponent has recognized that the access road to Turbine 4 may need to be shifted slightly to the west as it approaches County Road 4. This area is currently under active agricultural use and no significant features (woodlands, wetlands or valleylands) are located within 120m of the additional CDA. As a result of the change, a small area of additional Generalized Significant Wildlife Habitat (SWH) of the same type identified in the original Natural Heritage Assessment (NHA) documents for the Project was identified. No additional SWH was identified within 120m of the additional CDA.

Access Road/Underground Electrical Collection to Turbine 10

In response to discussion and comments received from the Municipality of West Grey regarding entrances to proposed access roads, the proponent has recognized that the access road to Turbine 10 may need to be shifted to the north slightly as it approaches The Glen Road. This area is currently under active agricultural use and no significant features (woodlands, wetlands or valleylands) are located within 120m of the additional CDA. As a result of the change, a small area of additional Generalized SWH of the same type identified in original NHA documents for the Project, was identified. No other SWH was identified within 120m of the additional CDA.

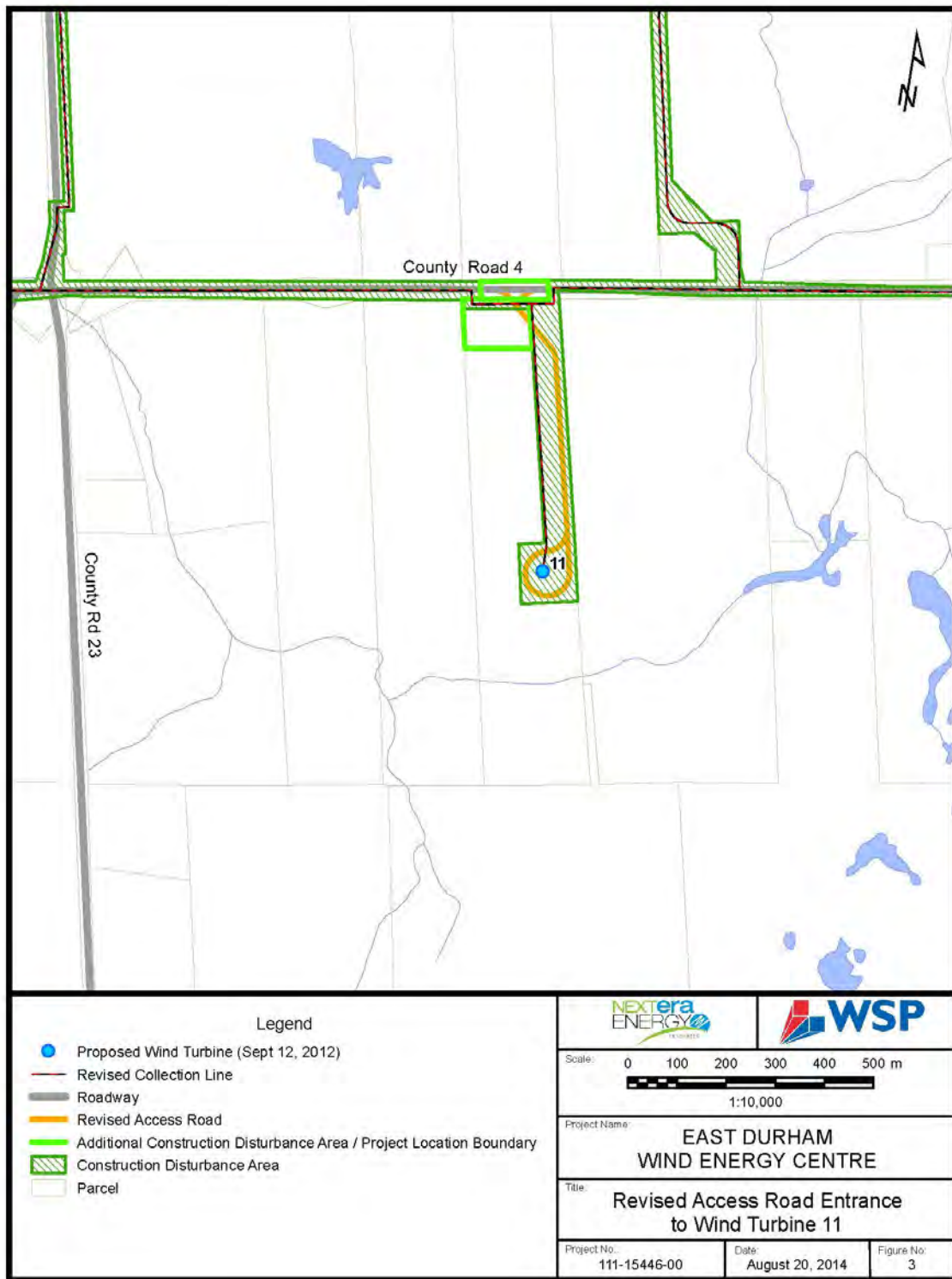
Figure 1: Revised Access Road Entrance for Turbine 4



Figure 2: Revised Access Road Entrance to Turbine 10



Figure 3: Revised Access Road Entrance to Turbine 11



Access Road/Underground Electrical Collection to Turbine 11

In order to comply with Grey County's revised entrance permit policy for entrances to access roads, the proponent has recognized that the access road to Turbine 11 may need to shift to the west slightly as it approaches County Road 4. As a result, the road right-of-way (ROW) directly adjacent to the property associated with Turbine 11, as well as additional land within the property parcel itself, are proposed for inclusion in the CDA for the Project. The area is currently under active agricultural use. A review of significant features (woodlands, wetlands or valleylands) located within 120m of the additional CDA indicates that a significant wetland (WE-12) is located 95m to the southwest and a significant woodland (WO-05) is located 20m to the east.

The portion of WE-12 that lies within 120m the additional CDA is a coniferous swamp that is part of the Beaver Meadow Provincially Significant Wetland (PSW). This PSW is a wetland complex made up of a number of wetland units to comprise the largest wetland feature identified in the project area. WE-12 has already been identified as being within 120m of the construction disturbance area of Turbine 11 that includes an access road and underground electrical collection in existing NHA documents for the Project. The distance of 95m from this feature identified as a result of the modification does not represent a greater impact than what was previously identified (47m); therefore no additional impacts or mitigation measures, beyond what is already identified in the Environmental Impact Study (EIS) in the NHA documents for the Project, are identified.

In the case of WO-05 the project layout (access road and underground electrical collection) presented in existing NHA documentation for the Project was already identified as being immediately adjacent (>0m) to the feature. The distance of 20m from WO-05 identified as a result of the additional CDA does not represent a greater impact than what was previously identified (>0m); therefore no additional impacts or mitigation, beyond what is already identified in the EIS for the Project, are identified.

As a result of the additional CDA, a small area of additional Generalized SWH of the same type identified in existing NHA documentation for the Project, was identified. No additional SWH was identified within 120m of the additional CDA.

2.1.2 Archaeological Assessment

The three site access entrances which are proposed to be changed were subject to additional Stage 2 archaeological field work which was undertaken by URS in October 2013. The findings and all field work have been documented in the "Additional Stage 2 Archaeological Assessment East Durham Wind Energy Project Alternative Access to Turbines and other Infrastructure Geographic Township of Glenelg, now West Grey Township, Grey County, Ontario" (January 29, 2014). Following completion of the Stage 2 archaeological assessment it was found that no new archaeological material or sites were identified and no further archaeological assessment was required for either of the access road entrances or underground electrical collection line associated with Turbine 4 or Turbine 10. There is a new site (identified as Location 4 site) that is located in the revised entrance area for Turbine 11, which would require a Stage 3 archaeological assessment if the area is to be impacted. Both the road entrance and the underground electrical collection line associated with Turbine 11 are sited to avoid the archaeological site and the associated 20 m buffer. Based on this no Stage 3 archaeological assessment will be required however a Monitor will need to be present during construction for the area within 20 m to 50 m of the Location 4 archaeological site that will be impacted (refer to Figure 4 below which outlines Location 4 and the associated archaeological buffers).

The findings and all Stage 2 archaeological field work have been documented in the Additional Stage 2 Archaeological Assessment report (January 29, 2014). The Stage 2 Archaeological Assessment Report was submitted to MTCS for review and acceptance into the Ontario Public Register of Archaeological Reports. Sign-off on the Stage 2 work was received on January 31, 2014 for the additional lands (alternative access) and the letter confirms that: (1) the Ministry is satisfied with the recommendations in the reports; and, (2) the fieldwork and reporting

for the archaeological assessment was consistent with the Standards and Guidelines for Consultant Archaeologists (2011). The MTCS sign-off letter is provided in Appendix B of this Modification Report.

Figure 4: Revised Access Road Entrance to Turbine 11 with Archaeological Buffers



2.2 New Potential Environmental Effects and Mitigation Measures

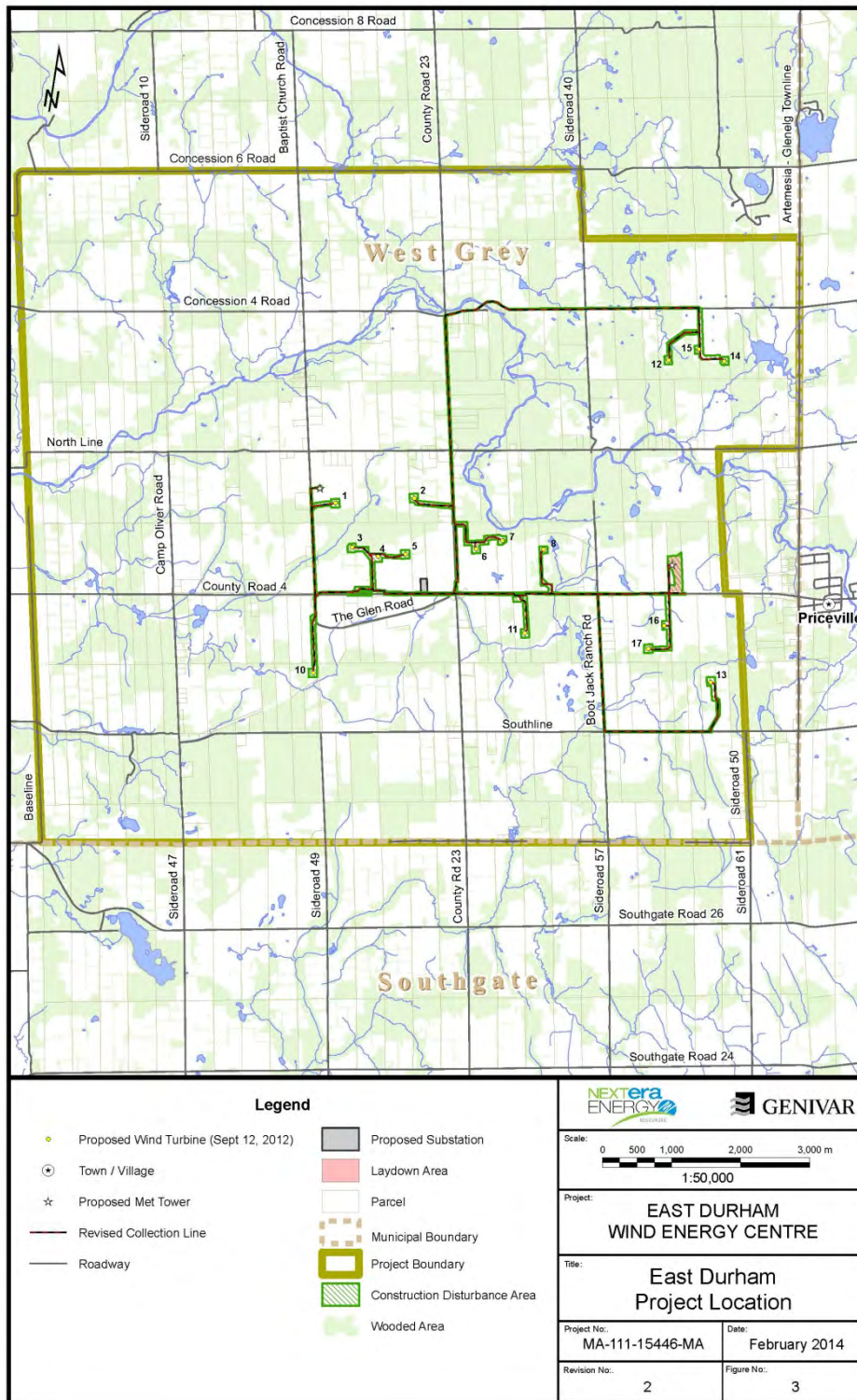
Given that the changes proposed to the Project do not entail the installation or operation of components not previously addressed, the construction, operation and decommissioning activities as they are described in the original REA application (NHA, Environmental Impact Study) for the Project remain accurate. No new significant wetlands, woodlands or valleylands have been identified in this modification report; and, new project components proposed are not any closer in proximity to the significant wetland, woodland and valleyland features than the closest components previously identified in the original NHA documentation. Likewise, although additional areas are included, no new types of Generalized SWH have been identified compared to what has previously been documented; therefore, no new impacts, mitigation measures, contingency or monitoring plans are required (see Table 2-1).

Following completion of the additional Stage 2 archaeological assessment there were no new archaeological material or sites identified for Turbines 4 or 10 and there is a new site (identified as Location 4 site) that is located in the revised entrance area for Turbine 11 that can be avoided and thus no further archaeological assessment was required for expansion of the CDA to accommodate the three revised access road entrances (see Table 2-1), on the provision of a Monitor to be on-site during construction of the road entrances for Turbine 11 in the areas within 20 m to 50 m of the Location 4 archaeological site.

Table 2-1: Summary of Project Modification

Proposed Modification	Rational for Proposed Modification	New Potential Environmental Effects	New Mitigation Measures
<p>Expansion of the project location due to an increase in the Construction Disturbance Area associated with the installation of three new access road entrances (Turbines 4, 10 and 11) and underground electrical collection lines</p>	<ul style="list-style-type: none"> • Two entrances (Turbine 4 and Turbine 11) from County Road 4 need to be modified in order to comply with a revised Grey County entrance permit policy which came into effect since the January 2013 submission of the REA documents to the MOE • One entrance (Turbine 10) from the Glen Road is in response to discussions and comments received from the Municipality of West Grey since the January 2013 submission of the REA documents to the MOE 	<p>None</p>	<p>None for Turbines 4 and 10 Turbine 11 will require provision of a Monitor to be present during construction within 20 m to 50 m of the identified Location 4 archaeological site</p>

Figure 5: Revised Project Location



3. EDITS TO THE PROJECT DESCRIPTION REPORT

Table 3-1 documents the edits to the Project Description Report from the modification described above.

Table 3-1: Edits to the Project Description Report

Section / Page	Original Text	Revised Text
Page 8	Figure 2-1 Project Location - showed the original construction disturbance area	Figure 2-1 Project Location – shows the increase in the Construction Disturbance Area associated with Turbine 4, Turbine 10 and Turbine 11.

4. EDITS TO THE DESIGN AND OPERATIONS REPORT

Table 4-1 documents the edits to the Design and Operations Report resulting from the modification described above.

Table 4-1: Edits to the Design and Operations Report

Section / Page	Original Text	Revised Text
Page 4	Figure 2-1 Project Location and Study Area Features - showed the original construction disturbance area	Figure 2-1 Project Location and Study Area Features – shows the increase in the Construction Disturbance Area associated with Turbine 4, Turbine 10 and Turbine 11.
Page 7	Figure 2-1 Project Location - showed the original construction disturbance area	Figure 2-1 Project Location – shows the increase in the Construction Disturbance Area associated with Turbine 4, Turbine 10 and Turbine 11.
Section 6.1 Cultural Heritage (Archaeological Assessment) / Page 17	<p>The findings and all Stage 2 archaeological field work have been documented in the Stage 2 Archaeological Assessment report and the Stage 2 Archaeological Assessment Additional Lands report. The Stage 2 Archaeological Assessment Reports were submitted to MTCs for review and acceptance into the Ontario Public Register of Archaeological Reports. Sign-off on the Stage 2 work was received on December 20, 2012 for the additional lands and on January 22, 2013 for the original Stage 2 and these letters confirm that: (1) the Ministry is satisfied with the recommendations in the reports; and, (2) the fieldwork and reporting for the archaeological assessment was consistent with the Standards and Guidelines for Consultant Archaeologists (2011).</p>	<p>The Project Location was increased with the additional Construction Disturbance Area changes to accommodate three access road entrances that have been revised. These revisions were subject to additional Stage 2 archaeological field work which was undertaken by URS in October 2013. The findings and all field work have been documented in the “Additional Stage 2 Archaeological Assessment East Durham Wind Energy Project Alternative Access to Turbines and other Infrastructure Geographic Township of Glenelg, now West Grey Township, Grey County, Ontario” (January 29, 2014). Following completion of the Stage 2 archaeological assessment it was found that no archaeological material or sites were identified and no further archaeological assessment was required for either of the two alternative access roads or underground electrical collection line associated with Turbine 4 or Turbine 10. There is a new site (identified as Location 4 site) that is located in the revised entrance area for Turbine 11, which would require a Stage 3 archaeological assessment if the area is to be impacted. Both the road entrance and the underground electrical collection line associated with Turbine 11 are sited to avoid the archaeological site and the associated 20 m buffer. Based on this no Stage 3 archaeological assessment will be required however a Monitor will need to be present during construction for the area within 20 m to 50 m of the Location 4 archaeological site that will be impacted.</p> <p>The findings and all Stage 2 archaeological field work have been documented in the Stage 2 Archaeological Assessment report and the Stage 2 Archaeological Assessment Additional Lands reports. The Stage 2 Archaeological Assessment Reports were submitted to MTCs for review and acceptance into the Ontario Public Register of Archaeological Reports. Sign-off on the Stage 2</p>

		<p>work was received on December 20, 2012 for the additional lands, on January 22, 2013 for the original Stage 2 and on January 31, 2014 for the additional lands (alternative access) and these letters confirm that: (1) the Ministry is satisfied with the recommendations in the reports; and, (2) the fieldwork and reporting for the archaeological assessment was consistent with the Standards and Guidelines for Consultant Archaeologists (2011).</p>
<p>Section 6.2 Natural Heritage / Page 18</p>	<p>Not applicable – add new paragraphs after paragraph 1.</p>	<p>Three entrances have been identified as in need of revision; two along County Road 4 and one on The Glen Road. The areas associated with the expanded construction disturbance for entrances at three turbine locations (Turbine 4, 10 and 11) were included within the areas where natural heritage surveys were previously conducted, therefore no additional site investigation was conducted specific to the proposed project layout changes for the increase in the CDA for the three site entrances. The “Natural Heritage Assessment – Addendum No. 2 Ontario Regulation 359/09 (January 2014)” was submitted to MNR on January 21, 2014.</p> <p>The increase in the Construction Disturbance Area for the three modified entrances did not result in any changes to the potential effects, mitigation measures, net effects and monitoring commitments regarding the natural heritage features, in addition to birds and bats, that were evaluated in the original and Addendum No 1. Natural Heritage Assessment Reports and the Environmental Effects Monitoring Plan.</p>

5. EDITS TO THE CONSTRUCTION PLAN REPORT

Table 5-1 documents the edits to the Construction Plan Report resulting from the modification described above.

Table 5-1: Edits to the Construction Plan Report

Section / Page	Original Text	Revised Text
Page 5	Figure 1-2 Project Location and Study Area Features - showed the original Construction Disturbance Area	Figure 1-2 Project Location and Study Area Features – shows the increase in the Construction Disturbance Area associated with Turbine 4, Turbine 10 and Turbine 11.
Page 8	Figure 2-1 Project Location - showed the original Construction Disturbance Area	Figure 2-1 Project Location – shows the increase in the Construction Disturbance Area associated with Turbine 4, Turbine 10 and Turbine 11.
Section 3.1 Cultural Heritage (Archaeological Assessment) / Page 17	<p>The findings and all Stage 2 archaeological field work have been documented in the Stage 2 Archaeological Assessment report and the Stage 2 Archaeological Assessment Additional Lands report. The Stage 2 Archaeological Assessment Reports were submitted to MTCS for review and acceptance into the Ontario Public Register of Archaeological Reports. Sign-off on the Stage 2 work was received on December 20, 2012 for the additional lands and on January 22, 2013 for the original Stage 2 and these letters confirm that: (1) the Ministry is satisfied with the recommendations in the reports; and, (2) the fieldwork and reporting for the archaeological assessment was consistent with the Standards and Guidelines for Consultant Archaeologists (2011).</p>	<p>The Project Location was increased with the additional Construction Disturbance Area changes to accommodate three access road entrances that have been revised. These revisions were subject to additional Stage 2 archaeological field work which was undertaken by URS in October 2013. The findings and all field work have been documented in the "Additional Stage 2 Archaeological Assessment East Durham Wind Energy Project Alternative Access to Turbines and other Infrastructure Geographic Township of Glenelg, now West Grey Township, Grey County, Ontario" (January 29, 2014). Following completion of the Stage 2 archaeological assessment it was found that no archaeological material or sites were identified and no further archaeological assessment was required for either of the two alternative access roads or underground electrical collection line associated with Turbine 4 or Turbine 10. There is a new site (identified as Location 4 site) that is located in the revised entrance area for Turbine 11, which would require a Stage 3 archaeological assessment if the area is to be impacted. Both the road entrance and the underground electrical collection line associated with Turbine 11 are sited to avoid the archaeological site and the associated 20 m buffer. Based on this no Stage 3 archaeological assessment will be required however a Monitor will need to be present during construction for the area within 20 m to 50 m of the Location 4 archaeological site that will be impacted.</p> <p>The findings and all Stage 2 archaeological field work have been documented in the Stage 2 Archaeological Assessment report and the Stage 2 Archaeological Assessment Additional Lands reports. The Stage 2 Archaeological Assessment Reports were submitted to MTCS for review and acceptance into the Ontario Public Register of Archaeological Reports. Sign-off on the Stage 2 work was received on December 20, 2012 for the</p>

		<p>additional lands, on January 22, 2013 for the original Stage 2 and on January 31, 2014 for the additional lands (alternative access) and these letters confirm that: (1) the Ministry is satisfied with the recommendations in the reports; and, (2) the fieldwork and reporting for the archaeological assessment was consistent with the Standards and Guidelines for Consultant Archaeologists (2011).</p>
<p>Section 3.2 Natural Heritage / Page 20</p>	<p>Not applicable – add new paragraphs after paragraph 1.</p>	<p>Three entrances have been identified as in need of revision; two along County Road 4 and one on The Glen Road. The areas associated with the expanded construction disturbance for entrances at three turbine locations (Turbine 4, 10 and 11) were included within the areas where natural heritage surveys were previously conducted, therefore no additional site investigation was conducted specific to the proposed project layout changes for the increase in the CDA for the three site entrances. The "Natural Heritage Assessment – Addendum No. 2 Ontario Regulation 359/09 (January 2014)" was submitted to MNR on January 21, 2014.</p> <p>The increase in the Construction Disturbance Area for the three modified entrances did not result in any changes to the potential effects, mitigation measures, net effects and monitoring commitments regarding the natural heritage features, in addition to birds and bats, that were evaluated in the original and Addendum No 1. Natural Heritage Assessment Reports and the Environmental Effects Monitoring Plan.</p>

6. EDITS TO THE DECOMMISSIONING PLAN REPORT

Table 6-1 documents the edits to the Decommissioning Plan Report resulting from the modification described above.

Table 6-1: Edits to the Decommissioning Plan Report

Section / Page	Original Text	Revised Text
Page 4	Figure 1-1 Project Location - showed the original construction disturbance area	Figure 1-1 Project Location – shows the increase in the Construction Disturbance Area associated with Turbine 4, Turbine 10 and Turbine 11.

7. SUMMARY AND CONCLUSIONS

The Project modification described in this Modification Report No. 1 does not change the overall conclusion of the REA Report which states that the Project can be constructed, installed, operated and decommissioned without any significant adverse residual effects.