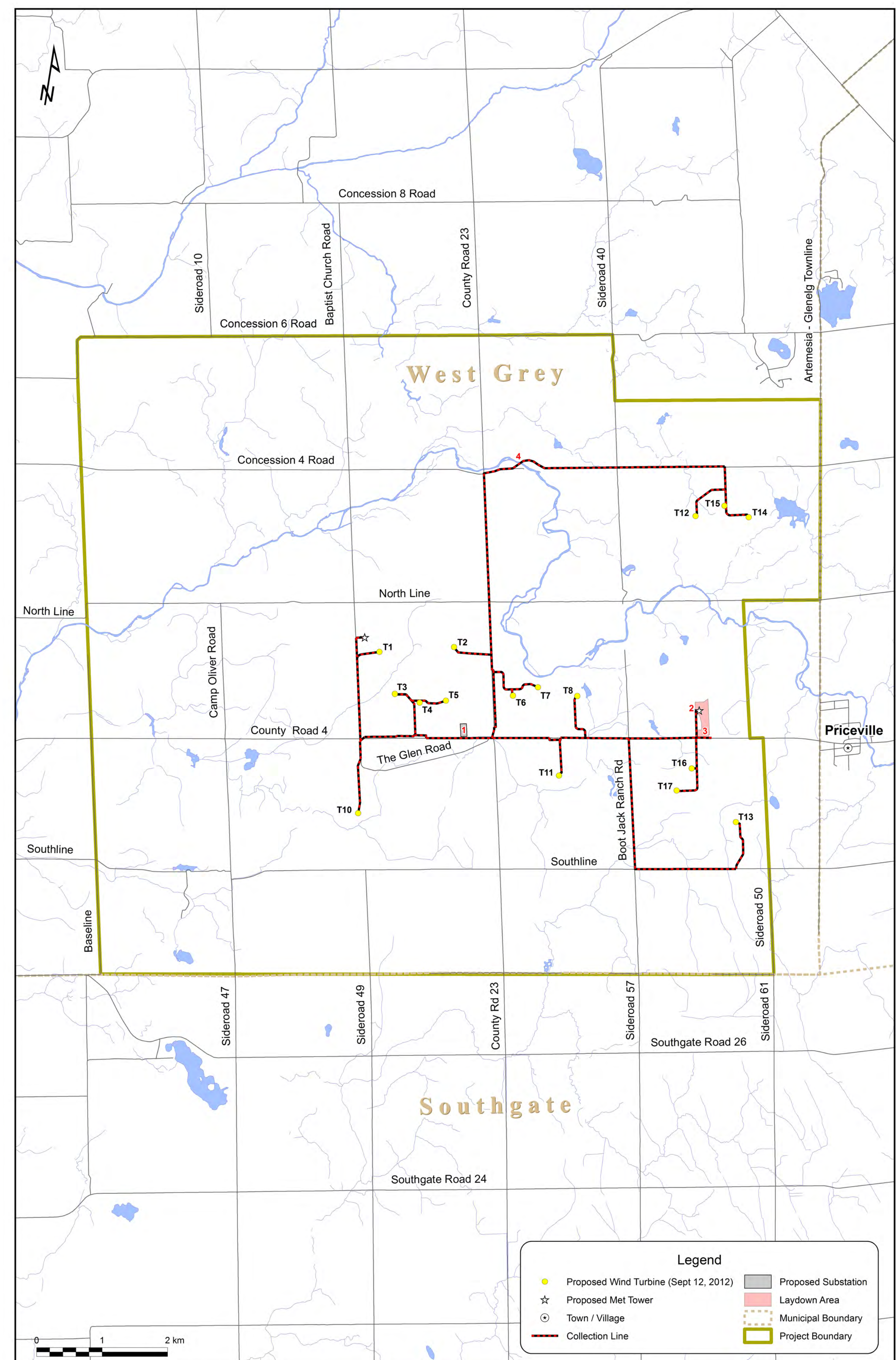


# WIND ENERGY CENTRE - OPEN HOUSE

## Modifications to the Project Since Release of Draft REA Reports

- Modifications\* have been made to the Project Location since the draft reports were circulated to address requests received. These include the following:
  1. Relocation of substation to property farther west along County Road 4 (on the north side) than the previous location, more central to project infrastructure;
  2. Addition of second meteorological tower on the north side of County Road 4 in the construction laydown area;
  3. Construction laydown area kept in the same location but increased in size by approximately 2 ha to include the area previously set aside for the substation; and
  4. Addition of option to have a short portion of the collection line be overhead at Saugeen River crossing on Concession 4 or option to attach cable to existing bridge structure.



\* Numbers 1-4 in red on the map correspond to the modifications listed.

Issues from Modifications	Potential Negative Effects	Mitigation Measures	Residual Effects
Amphibian Wetland Breeding Habitat	<u>Construction and Decommissioning</u> <ul style="list-style-type: none"> <li>• Morality and/or disturbance to amphibians</li> <li>• Release of silt/sediment/ contaminants into aquatic features</li> <li>• Changes to surface water drainage patterns</li> </ul>	<ul style="list-style-type: none"> <li>• Schedule construction activities outside breeding season (Mar 15 to Jun 30)</li> <li>• Implement erosion/sediment control plan</li> <li>• Maintain surface water drainage patterns</li> </ul>	<ul style="list-style-type: none"> <li>• Effects are expected to be short and temporary in duration, with low risk of residual effects</li> </ul>
	<u>Operations</u> <ul style="list-style-type: none"> <li>• Disturbance from lighting</li> </ul>	<ul style="list-style-type: none"> <li>• Ensure lighting is directional or directed away from breeding habitat</li> </ul>	<ul style="list-style-type: none"> <li>• Effects similar to agricultural use of the lands, therefore no residual effects are anticipated</li> </ul>
Colonial Nesting Bird Breeding Habitat	<u>Construction and Decommissioning</u> <ul style="list-style-type: none"> <li>• Disturbance to breeding activity</li> </ul>	<ul style="list-style-type: none"> <li>• No construction during heron breeding season (Mar 1 to Aug 1)</li> <li>• Follow construction best management practices</li> </ul>	<ul style="list-style-type: none"> <li>• Effects are expected to be short and temporary in duration, with low risk of residual effects</li> </ul>
Cultural Heritage resources and/or Landscape Features	<ul style="list-style-type: none"> <li>• No additional designated properties or buildings present</li> <li>• Distance setbacks minimize effects on landscape features</li> </ul>	<ul style="list-style-type: none"> <li>• Recommend returning laydown area to pre-existing condition after construction due to adjacent McKechnie Cemetery</li> </ul>	<ul style="list-style-type: none"> <li>• No residual effects</li> </ul>
Archaeological resources	<ul style="list-style-type: none"> <li>• No additional archaeological material or sites were identified</li> </ul>	<ul style="list-style-type: none"> <li>• None required</li> </ul>	<ul style="list-style-type: none"> <li>• No residual effects</li> </ul>