

APPENDIX B ARCHAEOLOGICAL ASSESSMENT ADDENDUM

From: [O'Neill, Nancy](#)
To: [Garcia, Andrea](#); [Lange, Michael](#); [Greenhouse, Ben](#)
Cc: [Constantin, Gabriel](#)
Subject: FW: Bornish Wind Energy Centre Archaeology Addendum - Turbine 38 Access Rd
Date: November-12-13 11:29:57 AM

Please see below email acceptance from MTCS on the proposed change in access road for T38.

Regards,

Nancy O'Neill

Team Leader
Environmental and Permitting Services
DNV GL Energy

19 Carmody Lane, Uxbridge, ON, L9P 1A5, Canada
Tel: +1 416 801 6822 Fax: +1 514 272 0410
www.gl-garradhassan.com

[As of 12 September 2013, DNV and GL have merged to DNV GL](#)
[The new company DNV GL has started operating as one company with effect from 12 September 2013. DNV GL forms the world's largest ship and offshore classification society, a leading technical advisor to the oil & gas industry and a leading expert for the energy value chain including renewables. DNV GL also takes the position as one of the top three certification bodies in the world. Read more here: \[www.dnv.com/merger\]\(http://www.dnv.com/merger\)](#)

This email is issued on behalf of GL Garrad Hassan Canada, Inc. (trading as GL Garrad Hassan) and is subject to the GL Garrad Hassan [email disclaimer](#).

From: Bryant, Kathryn (MTCS) [mailto:Kathryn.Bryant@ontario.ca]
Sent: Tuesday, November 12, 2013 11:26 AM
To: O'Neill, Nancy
Cc: Rohaly, Blair (MTCS)
Subject: RE: Bornish Wind Energy Centre Archaeology Addendum - Turbine 38 Access Rd

Hi Nancy,

Based on the information provided in the attached memo and the results of the Stage 2 assessment we have no archaeological concerns for the proposed change in the location of the Bornish Wind Energy Centre access road to T38.

Sincerely,

Kathryn Bryant

Archaeology Review Officer
Culture Programs Unit
Ministry of Tourism, Culture and Sport
401 Bay Street, Suite 1700
Toronto, Ontario
M7A 0A7
416-314-5192
Kathryn.Bryant@ontario.ca

From: O'Neill, Nancy [mailto:Nancy.O'Neill@gl-garradhassan.com]
Sent: November 11, 2013 12:57 PM
To: Rohaly, Blair (MTCS)
Cc: Garcia, Andrea; Constantin, Gabriel; Tuck, Jennifer; Lange, Michael
Subject: Bornish Wind Energy Centre Archaeology Addendum - Turbine 38 Access Rd

Hello Blair,

Please find the attached memo describing an addendum to the Bornish Wind Energy Centre, access road to T38. As indicated by the memo, the addition of the access road to the south of T38 along the field edge has been reviewed and accepted by the MTCS under a previous submission of 18 April 2013. We anticipate that the MOE will require a letter or email from your office confirming that the MTCS has no concerns with this change. Can you please review the memo and provide confirmation?

Please feel free to contact me with any questions.

Sincerely,

Nancy O'Neill

Team Leader
Environmental and Permitting Services
DNV GL Energy

19 Carmody Lane, Uxbridge, ON, L9P 1A5, Canada
Tel: +1 416 801 6822 Fax: +1 514 272 0410
www.gl-garradhassan.com

As of 12 September 2013, DNV and GL have merged to DNV GL

The new company DNV GL has started operating as one company with effect from 12 September 2013. DNV GL forms the world's largest ship and offshore classification society, a leading technical advisor to the oil & gas industry and a leading expert for the energy value chain including renewables. DNV GL also takes the position as one of the top three certification bodies in the world. Read more here: www.dnv.com/merger

This email is issued on behalf of GL Garrad Hassan Canada, Inc. (trading as GL Garrad Hassan) and is subject to the GL Garrad Hassan [email disclaimer](#).

From: [Bryant, Kathryn \(MTCS\)](#)
To: [Constantin, Gabriel](#)
Cc: [Rohaly, Blair \(MTCS\)](#)
Subject: RE: Bornish Wind Energy Centre Archaeology Addendum - Transmission Line Easements
Date: December-19-13 8:54:45 AM

Hi Gabriel,

Thanks for the higher resolution mapping. Based on the information provided in the attached memo and the results of the Stage 2 assessment we have no archaeological concerns for the proposed changes to the Bornish transmission line easements along Elginfield and Nairn Roads.

Sincerely,

Kathryn Bryant
Archaeology Review Officer
Culture Programs Unit
Ministry of Tourism, Culture and Sport
401 Bay Street, Suite 1700
Toronto, Ontario
M7A 0A7
416-314-5192
Kathryn.Bryant@ontario.ca

From: Constantin, Gabriel [<mailto:gabriel.constantin@dnvgl.com>]
Sent: December-17-13 4:10 PM
To: Bryant, Kathryn (MTCS)
Cc: Rohaly, Blair (MTCS)
Subject: RE: Bornish Wind Energy Centre Archaeology Addendum - Transmission Line Easements

Hi Kathryn,

The right map was provided, but the easements are difficult to see. I'm sending you the same version of the map, but I think the resolution is better. The easement are the narrow and long purple areas along Elginfield and Nairn roads – you will have to zoom in to see them properly.

Let me know if you have any other questions. Thanks,

Gabriel

Gabriel Constantin, M. Sc.
Analyst / Coordinator, Ontario Region
Environment and Permitting Services
GL Garrad Hassan

712 Gladstone Av., Toronto, ON, M6H 3J4, Canada
Tel: +1 416 320 4636 / Fax: +1 514 272 0410
www.gl-garradhassan.com

As of 12 September 2013, DNV and GL have merged to DNV GL
The new company DNV GL has started operating as one company with effect from 12 September 2013. DNV GL forms the world's largest ship and offshore classification society, a leading technical advisor to the oil & gas industry and a leading expert for the energy value chain including renewables. DNV GL also takes

the position as one of the top three certification bodies in the world. Read more here: www.dnv.com/merger

This email is issued on behalf of GL Garrad Hassan Canada Inc. and is subject to the GL Garrad Hassan [email disclaimer](#).

From: Bryant, Kathryn (MTCS) [<mailto:Kathryn.Bryant@ontario.ca>]
Sent: December-17-13 3:10 PM
To: Constantin, Gabriel
Cc: Rohaly, Blair (MTCS)
Subject: RE: Bornish Wind Energy Centre Archaeology Addendum - Transmission Line Easements

Hi Gabriel,

The map provided in the memo doesn't appear to show the new transmission line easements as having been assessed. Could you double-check that the right map was included? Thanks.

Kathryn Bryant

Archaeology Review Officer
Culture Programs Unit
Ministry of Tourism, Culture and Sport
401 Bay Street, Suite 1700
Toronto, Ontario
M7A 0A7
416-314-5192
Kathryn.Bryant@ontario.ca

From: Constantin, Gabriel [<mailto:gabriel.constantin@dnvgl.com>]
Sent: December 16, 2013 4:54 PM
To: Rohaly, Blair (MTCS)
Cc: Garcia, Andrea; Nancy.O'neill@nexteraenergy.com; Lange, Michael
Subject: Bornish Wind Energy Centre Archaeology Addendum - Transmission Line Easements

Hi Blair,

Please find the attached memo describing an addendum to the Bornish Wind Energy Centre to include new transmission-line easements. As indicated by the memo, the additional lands for transmission line construction to include private easements have been reviewed and accepted by the MTCS under a previous submission of 28 November 2013. We anticipate that the MOE will require a letter or email from your office confirming that the MTCS has no concerns with this change. Can you please review the memo and provide confirmation?

Please feel free to contact me if you have questions.

Sincerely,

Gabriel Constantin, M. Sc.
Analyst / Coordinator, Ontario Region
Environment and Permitting Services
GL Garrad Hassan

712 Gladstone Av., Toronto, ON, M6H 3J4, Canada
Tel: +1 416 320 4636 / Fax: +1 514 272 0410
www.gl-garradhassan.com

As of 12 September 2013, DNV and GL have merged to DNV GL

The new company DNV GL has started operating as one company with effect from 12 September 2013. DNV GL forms the world's largest ship and offshore classification society, a leading technical advisor to the oil & gas industry and a leading expert for the energy value chain including renewables. DNV GL also takes

the position as one of the top three certification bodies in the world. Read more here: www.dnv.com/merger

This email is issued on behalf of GL Garrad Hassan Canada Inc. and is subject to the GL Garrad Hassan [email disclaimer](#).

TECHNICAL NOTE

Title	Bornish Wind Energy Centre – Addendum to Archaeological Assessment
Client	NextEra Energy Canada, ULC
Contact	Ben Greenhouse
Document No.	2013-1008-CAMO-T-02
Issue	A
Classification	Client’s Discretion
Author	G. Constantin
Approved	N. O’Neill

History

Issue	Date	Summary
A	7 November 2013	Original release

1 INTRODUCTION

Bornish Wind L.P., a wholly-owned subsidiary of NextEra Energy Canada ULC (NextEra), is proposing to develop the Bornish Wind Energy Centre (the “Project”) located in the Municipality of North Middlesex, Middlesex County, Ontario. The Project received a Renewable Energy Approval (REA) from the Ministry of the Environment (MOE) on 26 April 2013 [1]. Subsequent to the issuance of the REA approval, the Project location has been modified as compared to REA application dated 23 July 2012.

2 DESCRIPTION OF CHANGE

The proposed modification to the Project consists of the addition of Project access roads to facilitate access to Turbine 38 (T38) and subsequently minimize the impact to agricultural land once the construction phase is completed. Figure 2-1 illustrates the proposed modification to the access roads that was not considered in the originally planned layout.

A Stage 2 archaeological assessment was completed by Golder Associates on 18 April 2012 [2] and submitted to the Ministry of Tourism, Culture and Sport (MTCS) for acceptance. A MTCS satisfaction letter was provided on 27 April 2012 [3] confirming that based on the information contained in the report, the ministry believes that the archaeological assessment complies with the *Ontario Heritage Act's* licensing requirements, including the ministry's 2011 Standards and Guidelines.

For comparison purposes, Figure 2-1 below indicates the access roads as submitted for the Bornish Wind Energy Centre REA and the additional access roads proposed for T38. The figure further illustrates the Stage 2 assessed area as completed on 18 April 2012 and accepted 27 April 2012 by the MTCS. Since the new access roads are completely within the Stage 2 assessed area, we request that the MTCS provide record of acknowledgement of this change.



Figure 2-1: Proposed Layout Modification

REFERENCES

- [1] Ministry of Environment (MOE), Renewable Energy Approval letter (2494-94QQ97) - Bornish Wind Energy Centre, dated 26 April 2013
- [2] Golder Associates Ltd., Stage 2 Archaeological Assessment (Revised Report) – NextEra Bornish Wind Energy Centre, dated 18 April 2012
- [3] MTCS, RE: NextEra Bornish Energy Centre. East Williams, West Williams and Adelaide Townships, Middlesex County. FIT-F2BNU4R. 39EA019, P218-097-2011 & P319-013-2012, 057-534-2009 & P057-613-2010, dated 27 April 2012

TECHNICAL NOTE

Title	Bornish Wind Energy Centre – Addendum to Archaeological Assessment
Client	NextEra Energy Canada, ULC
Contact	Ben Greenhouse
Document No.	2013-1008-CAMO-T-03
Issue	A
Classification	Client’s Discretion
Author	G. Constantin
Approved	E. Crivella

History

Issue	Date	Summary
A	16 December 2013	Original release

1 INTRODUCTION

Bornish Wind L.P., a wholly-owned subsidiary of NextEra Energy Canada ULC (NextEra), is proposing to develop the Bornish Wind Energy Centre (the “Project”) located in the Municipality of North Middlesex, Middlesex County, Ontario. The Project received a Renewable Energy Approval (REA) from the Ministry of the Environment (MOE) on 26 April 2013 [1]. Subsequent to the issuance of the REA approval, the Project location has been modified as compared to REA application dated 23 July 2012.

2 DESCRIPTION OF CHANGE

The proposed modification to the Project consists of additional lands for transmission line construction to include private easements that were not considered in the originally planned layout. Figure 2-1 illustrates the proposed modification.

A Stage 2 archaeological assessment was completed by URS Canada Inc. on 28 November 2013 [2] and submitted to the Ministry of Tourism, Culture and Sport (MTCS) for acceptance. A MTCS satisfaction letter was provided on 12 December 2013 [3] confirming that based on the information contained in the report, the Ministry is satisfied that the archaeological assessment complies with the Ministry's 2011 Standards and Guidelines [4].

For comparison purposes, Figure 2-1 below indicates the 115 kV transmission line within the right-of-way (ROW) as submitted with the Bornish Wind Energy Centre REA and the segments of transmission line easement along private parcels. The figure further illustrates the Stage 2 assessed area as completed on 28 November 2013 and accepted 12 December 2013 by the MTCS. Since the new private easements are completely within the Stage 2 assessed area, we request that the MTCS provide record of acknowledgement of this change.

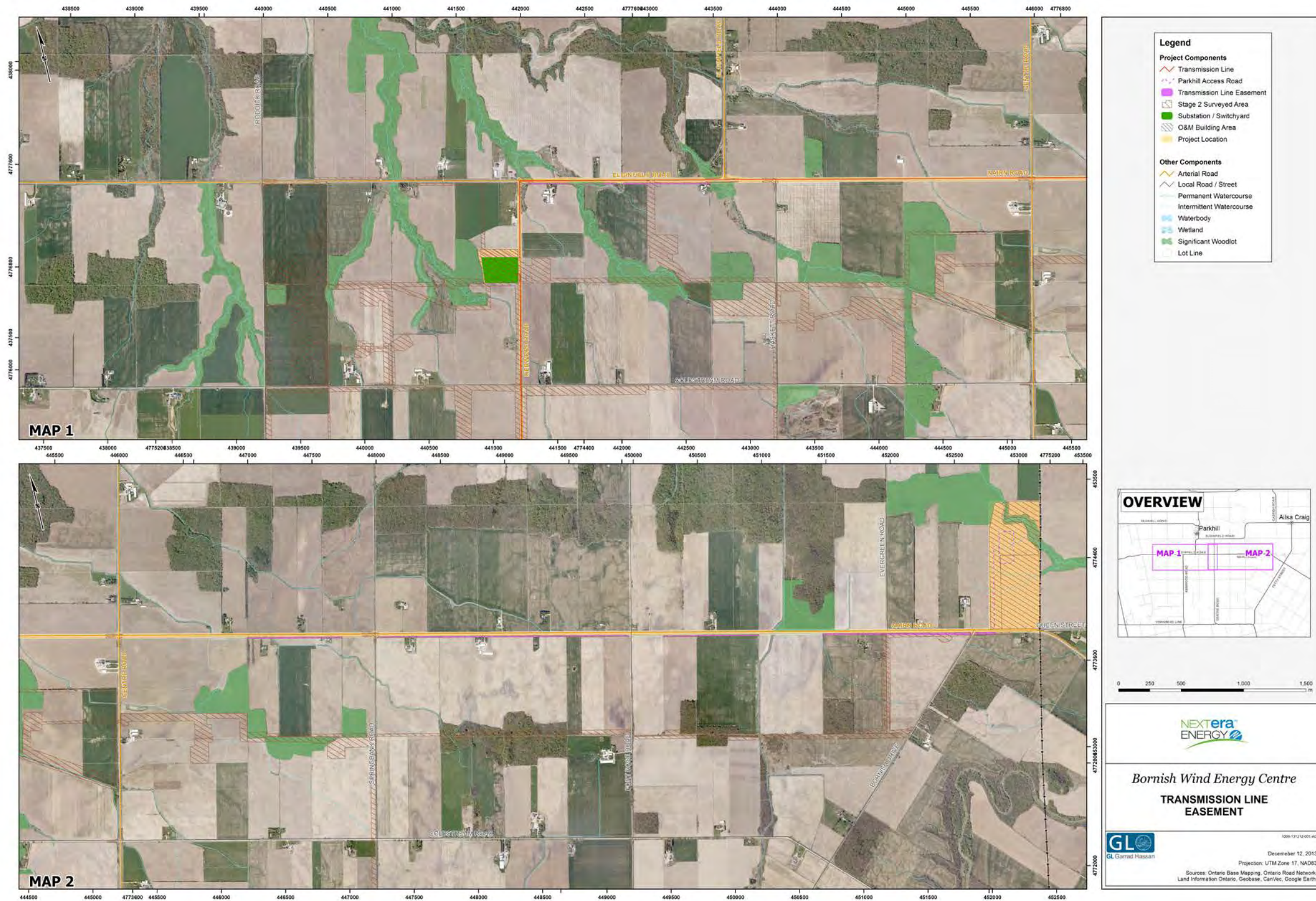


Figure 2-1: Proposed Layout Modification

REFERENCES

- [1] Ministry of Environment (MOE), Renewable Energy Approval letter (2494-94QQ97) - Bornish Wind Energy Centre, dated 26 April 2013.
- [2] URS Canada Inc., Stage 2 Archaeological Assessment (Revised Report) – NextEra Bornish Wind Energy Centre, dated 28 November 2013.
- [3] MTCS, RE: Review and Entry into the Ontario Public Register of Archaeological Reports: Archaeological Assessment Report Entitled, "STAGE 2 ARCHAEOLOGICAL ASSESSMENT NextEra Bornish Wind Energy Centre Nairn T-line, Various Lots and Concessions, Geographic Townships of East and West Williams, Middlesex County, Ontario FIT# F2BNU4R ", Dated Nov 28, 2013, Filed with MTCS Toronto Office on Dec 9, 2013, MTCS Project Information Form Number P123-0212-2013, OPA Reference Number FIT-F2BNU4R, dated 12 December 2013.
- [4] MTCS, Standards and Guidelines for Consultant Archeologists, <http://www.mtc.gov.on.ca/en/archaeology/archaeology_s_g.shtml> accessed 13 December 2013, dated 1 January 2011.