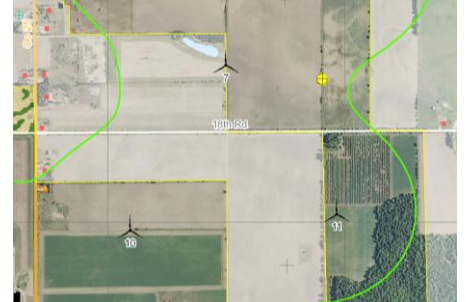




**ADELAIDE WIND ENERGY CENTRE  
RENEWABLE ENERGY APPROVAL APPLICATION  
DESIGN AND OPERATIONS REPORT  
APPENDIX D**



Renewable Energy Operations Team  
P.O. Box 7000  
300 Water Street  
4<sup>th</sup> Floor, South Tower  
Peterborough, ON K9J 8M5

---

April 12, 2012

NextEra Energy Canada  
5500 Service Road, Suite 205  
Burlington, ON L7L 6W6

**RE: NHA Confirmation for Adelaide Wind Energy Centre**

Dear Tom Bird:

In accordance with the Ministry of the Environment's (MOE's) Renewable Energy Approvals (REA) Regulation (O.Reg.359/09), the Ministry of Natural Resources (MNR) has reviewed the natural heritage assessment and environmental impact study for the Adelaide Wind Energy Centre located in Middlesex County, submitted by Nextera Energy Canada on April 10, 2012.

In accordance with Section 28(2) and 38(2)(b) of the REA regulation, MNR provides the following confirmations following review of the natural heritage assessment:

1. The MNR confirms that the determination of the existence of natural features and the boundaries of natural features was made using applicable evaluation criteria or procedures established or accepted by MNR.
2. The MNR confirms that the site investigation and records review were conducted using applicable evaluation criteria or procedures established or accepted by MNR.
3. The MNR confirms that the evaluation of the significance or provincial significance of the natural features was conducted using applicable evaluation criteria or procedures established or accepted by MNR.
4. The MNR confirms that the project location is not in a provincial park or conservation reserve.
5. The MNR confirms that the environmental impact assessment report has been prepared in accordance with procedures established by the MNR.

In accordance with Appendix D of MNR's Natural Heritage Assessment Guide, a commitment has been made to complete pre-construction assessments of habitat use for candidate significant wildlife habitats. MNR has reviewed and confirmed the assessment methods and the range of mitigation options. Pending completion of the pre-construction assessments and determination of significance, the appropriate mitigation is expected to be implemented, as committed to in the environmental impact study for the following candidate significant wildlife habitats:

- Raptor Wintering Area (features RWA-002, RWA-003, RWA-004)
- Bat Maternity Colonies (BMA-011, BMA-012, BMA-014, BMA-016, BMA-017, BMA-019, BMA-020)
- Amphibian Woodland Breeding (features AWO-001, AWO-002, AWO-004, AWO-005)
- Carey's Sedge (feature CAS-001, CAS-002, CAS-003, CAS-004, CAS-005, CAS-006, CAS-007)
- Yellow Stargrass (features YSG-001, YSG-002)

In addition to the NHA, Environmental Effects Monitoring Plans that address post-construction monitoring and mitigation for birds and bats must be prepared and implemented. It is recommended that post-construction monitoring plans be prepared in accordance with MNR Guidelines and be reviewed by MNR in advance of submitting a REA application to MOE in order to minimize potential delays in determining if the application is complete.

This confirmation letter is valid for the project as proposed in the natural heritage assessment and environmental impact study, including those sections describing the Environmental Effects Monitoring Plan and Construction Plan Report. Should any changes be made to the proposed project that would alter the NHA, MNR may need to undertake additional review of the NHA.

Where specific commitments have been made by the applicant in the NHA with respect to project design, construction, rehabilitation, operation, mitigation, or monitoring, MNR expects that these commitments will be considered in MOE's Renewable Energy Approval decision and, if approved, be implemented by the applicant.

In accordance with S.12 (1) of the Renewable Energy Approvals Regulation, this letter must be included as part of your application submitted to the MOE for a Renewable Energy Approval.

Please be aware that your project may be subject to additional legislative approvals as outlined in the Ministry of Natural Resources' *Approvals and Permitting Requirements Document*. These approvals are required prior to the construction of your renewable energy facility.

If you wish to discuss any part of this confirmation or additional comments provided, please contact me at [jim.beal@ontario.ca](mailto:jim.beal@ontario.ca) or 705-755-3203.

Sincerely,



Jim Beal  
Renewable Energy Provincial Field Program Coordinator  
Regional Operations Division  
Ministry of Natural Resources

- cc. Mitch Wilson, District Manager, MNR Aylmer District
- cc. Amy Cameron, A/Renewable Energy Field Advisor, MNR REOT
- cc. Erin Cotnam, A/Renewable Energy Coordinator, MNR Southern Region
- cc. Narren Santos, Environmental Assessment and Approvals Branch, MOE

cc. Sandra Guido, Environmental Assessment and Approvals Branch, MOE  
cc. Andrew Ryckman, Terrestrial and Wetland Biologist, NRSI  
cc. Kaitlin Powers, Terrestrial and Wetland Biologist, NRSI